

Technical Data Sheet

25 x 50 Module (Euromodule) RJ11 (RJ12, RJ14, RJ25) Socket

Description

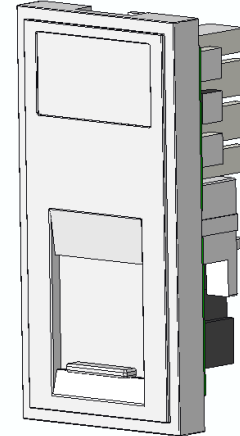
A 6 pin jack socket commonly used for telephone line connections. It will except RJ11, RJ12, RJ14 and RJ 25 line jacks. RJ11 is a 6P2C configuration normally used for a single phone using a single pair cable. RJ14 is a 6P4C configuration normally used for two phones using a twin pair of cables. RJ12 (also know as a RJ25) is a 6P6C configuration normally used for 3 phones using 3 pairs of cable

Standards and Approvals

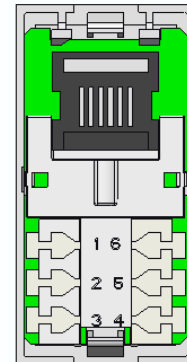
RoHS Directive 2011/65/EC

Features

- Black or white to complement plate
- Clip-in for easy installation
- Flame retarding Polycarbonate



Terminal Identification					
Position	RJ12	RJ14	RJ11	Pair	Colour
1	1			3	White/Green
2	2	1		2	White/Orange
3	3	2	1	1	Blue/White
4	4	3	2	1	White/Blue
5	5	4		2	Orange/White
6	6			3	Green/White



Recommended box deep 35

